

CN LINE

Innovative Engineering in CN Line Heat Exchangers feature:

CN-Series pool heaters provide a simple method of heating swimming pool water indirectly from a central heating boiler.

- removable cupronickel tube bundle heat transfer surface
- shell made of cast iron
- tube side operating pressure 87 PSIG
- shell side operating pressure to 87 PSIG
- operating temperature up to 100°C
- **perfect solution for saltwater swimming pools**
- heat exchange surface made of cupro nickel
- nominal heating capacities up to 1,000,000 btu/hr for pool applications
- eliminates the need for external bypass as the whole pool flow goes through the heat exchanger

Manufactured under stringent quality control standards, our CN Line Heat Exchangers offer:

- **High Efficiency Pool Heating**
- **Compact Design**
- **Heavy Duty Construction**
- **Removable Tubestacks**
- **Cost Effective**
- **Immediate Delivery from Stock**

Applications

- Pools, spas and hot tubs
- Domestic hot water
- Sea water applications
- Waste water heat recovery

Standard Material

Tube Side (Pool Water): Copper Nickel

Shell Side (Boiler Water): Bronze or Cast Iron

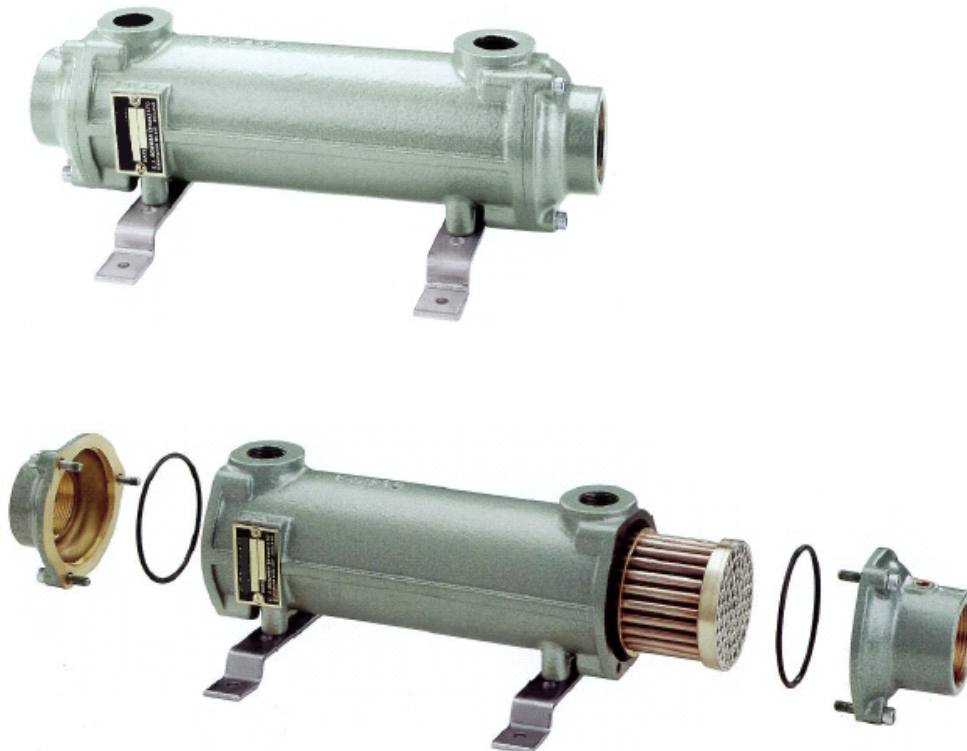
Maximum Allowable Working Pressure

Hot side: 6 barg (87psig)

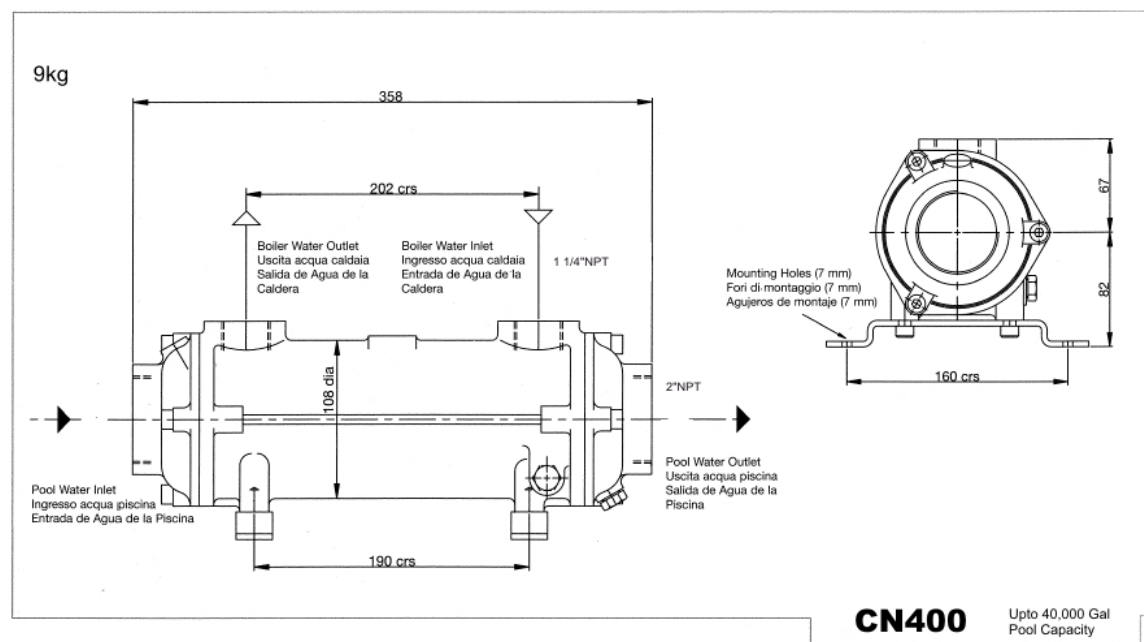
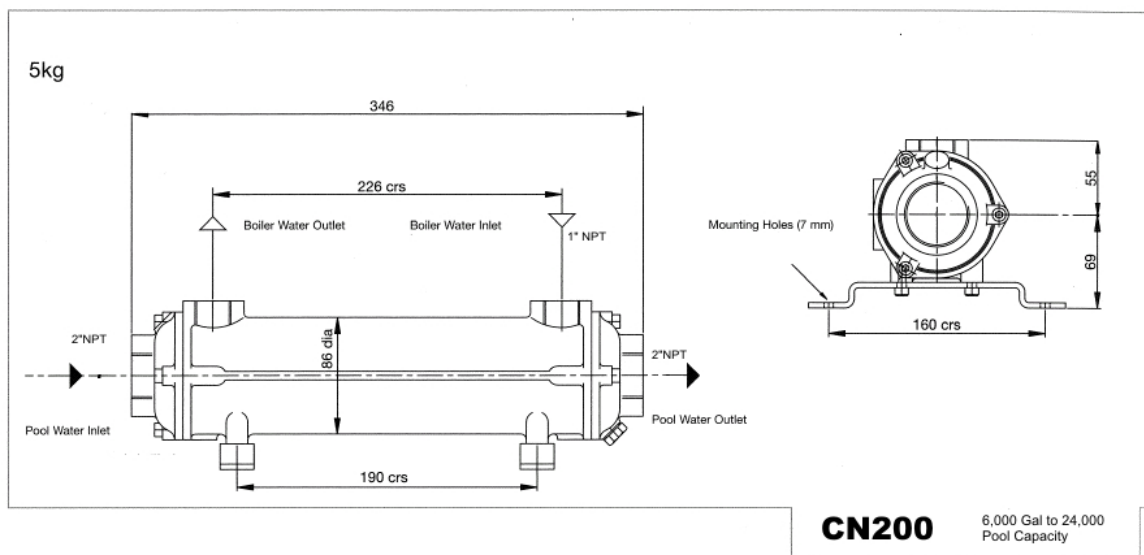
Cold Side: 6 barg (87psig)

Maximum Allowable Working Temperature

90°C



Units kept in stock for immediate delivery.



Heat Exchanger Type	Nominal Capacity		Boiler Water (Shell Side)		Pool Water (Tube Side)	
	kW	Btu/hr	Flow gpm	Pressure Drop psi	Flow gpm	Pressure Drop psi
CN200	58.4	200,000	9	1.94	30	1.00
CN400	117	400,000	20	1.14	78	2.25
CN650	190	650,000	25	0.75	100	2.13
CN1000	292	1,000,000	38	1.00	154	2.00